




RESEARCH ARTICLE

A superhydrophobic cone to facilitate the xenomonitoring of filarial parasites, malaria, and trypanosomes using mosquito excreta/feces [version 1; referees: 2 approved]

Darren A.N. Cook¹, Nils Pilotte^{2,3}, Corrado Minetti¹, Steven A. Williams^{2,3},
Lisa J. Reimer ¹

¹Department of Vector Biology, Liverpool School of Tropical Medicine, Liverpool, L3 5QA, UK

²Department of Biological Sciences, Smith College, Northampton, MA, 01063, USA

³Program in Molecular and Cellular Biology, University of Massachusetts, Amherst, MA, 01003, USA

v1 First published: 06 Nov 2017, 1:7 (doi: [10.12688/gatesopenres.12749.1](https://doi.org/10.12688/gatesopenres.12749.1))
Latest published: 06 Nov 2017, 1:7 (doi: [10.12688/gatesopenres.12749.1](https://doi.org/10.12688/gatesopenres.12749.1))

Abstract

Background: Molecular xenomonitoring (MX), the testing of insect vectors for the presence of human pathogens, has the potential to provide a non-invasive and cost-effective method for monitoring the prevalence of disease within a community. Current MX methods require the capture and processing of large numbers of mosquitoes, particularly in areas of low endemicity, increasing the time, cost and labour required. Screening the excreta/feces (E/F) released from mosquitoes, rather than whole carcasses, improves the throughput by removing the need to discriminate vector species since non-vectors release ingested pathogens in E/F. It also enables larger numbers of mosquitoes to be processed per pool. However, this new screening approach requires a method of efficiently collecting E/F.


Methods: We developed a cone with a superhydrophobic surface to allow for the efficient collection of E/F. Using mosquitoes exposed to either *Plasmodium falciparum*, *Brugia malayi* or *Trypanosoma brucei brucei*, we tested the performance of the superhydrophobic cone alongside two other collection methods.

Results: All collection methods enabled the detection of DNA from the three parasites. Using the superhydrophobic cone to deposit E/F into a small tube provided the highest number of positive samples (16 out of 18) and facilitated detection of parasite DNA in E/F from individual mosquitoes. Further tests showed that following a simple washing step, the cone can be reused multiple times, further improving its cost-effectiveness.


Conclusions: Incorporating the superhydrophobic cone into mosquito traps or holding containers could provide a simple and efficient method for collecting E/F. Where this is not possible, swabbing the container or using the washing method facilitates the detection of the three parasites used in this study.

Open Peer Review

Referee Status:  

	Invited Referees	
	1	2
version 1 published 06 Nov 2017	 report	 report

1 **Dziedzom K. de Souza**, University of Ghana, Ghana

2 **Warwick N. Grant** , La Trobe University, Australia

Discuss this article

Comments (0)

Corresponding author: Lisa J. Reimer (lisa.reimer@lstmed.ac.uk)

Author roles: **Cook DAN:** Conceptualization, Investigation, Methodology, Writing – Original Draft Preparation; **Pilotte N:** Funding Acquisition, Methodology, Resources, Writing – Review & Editing; **Minetti C:** Methodology, Writing – Review & Editing; **Williams SA:** Methodology, Resources, Writing – Review & Editing; **Reimer LJ:** Conceptualization, Investigation, Methodology, Supervision, Writing – Review & Editing

Competing interests: No competing interests were disclosed.

How to cite this article: Cook DAN, Pilotte N, Minetti C *et al.* **A superhydrophobic cone to facilitate the xenomonitoring of filarial parasites, malaria, and trypanosomes using mosquito excreta/feces [version 1; referees: 2 approved]** Gates Open Research 2017, 1:7 (doi: [10.12688/gatesopenres.12749.1](https://doi.org/10.12688/gatesopenres.12749.1))

Copyright: © 2017 Cook DAN *et al.* This is an open access article distributed under the terms of the [Creative Commons Attribution Licence](https://creativecommons.org/licenses/by/4.0/), which permits unrestricted use, distribution, and reproduction in any medium, provided the original work is properly cited.

Grant information: Bill & Melinda Gates Foundation [OPP1154992] and Medical Research Council [MR/P025285/1].
The funders had no role in study design, data collection and analysis, decision to publish, or preparation of the manuscript.

First published: 06 Nov 2017, 1:7 (doi: [10.12688/gatesopenres.12749.1](https://doi.org/10.12688/gatesopenres.12749.1))

Introduction

The screening of insect vectors for the presence of DNA or RNA from human pathogens is known as molecular xenomonitoring (MX). This approach is different to transmission monitoring in that it documents exposure of a potential vector to blood-borne pathogens in the host, rather than assessing the transmission of infective stages to the host. The non-invasive monitoring of disease presence in a community is becoming increasingly important as many countries move towards the elimination of vector-borne diseases. Documenting the decline of a pathogen within a community and sensitively detecting recrudescence is essential to allow a rapid response to (re-)emergence and to prevent widespread outbreak.

The utility of MX to detect the presence of the parasite within a community has been demonstrated for lymphatic filariasis (LF) across a diverse range of locations (Ghana¹, Egypt², American Samoa³, Papua New Guinea⁴ and Sri Lanka⁵), with different species of vectors (*Anopheles*, *Aedes* and *Culex* species) and parasites (*Wuchereria bancrofti*, *Brugia malayi*, and *Brugia timori*⁶). The Global Programme to Eliminate LF aims to eliminate the disease as a public health problem by 2020 using the strategy of at least five rounds of annual mass drug administration (MDA) to interrupt transmission of the parasite. Following MDA scale down, transmission assessment surveys (TAS) will be conducted to screen for the presence of adult worm antigens (*W. bancrofti*) or host antibodies (*B. malayi*) in school children to determine whether exposure has occurred post-MDA⁷. Conducting TAS can be logistically challenging, expensive⁸ and is dependent on strong community engagement and acceptance if it requires repeated sampling⁹. In some settings, after many rounds of MDA, TAS may lack the sensitivity required to accurately detect ongoing transmission¹⁰. As an example, having passed two TAS, MX identified areas of localised transmission in American Samoa¹¹. Using MX to complement TAS may enable targeted interventions that reduce the likelihood of recrudescence. An unsuccessful TAS indicates transmission rates may exceed the critical threshold, leading to the development of new, patent, infections requiring the community to undertake additional rounds of MDA. Since MX has the potential to provide real-time, non-invasive and cost-effective surveillance of the human population, a positive sample could trigger a rapid, targeted response, preventing further infections and reducing the need for additional rounds of MDA.

As control programmes for other vector-borne diseases, such as Human African Trypanosomiasis¹² and malaria¹³, continue to make progress towards elimination, MX could have a similar role to play in the monitoring of community infection levels by using insect vectors as ‘flying syringes’¹⁴. Sensitive detection of the causative agents of malaria and trypanosomiasis has been demonstrated using MX^{15,16}. MX may help malaria control programmes to direct vector control measures to specific areas of potential transmission or to implement surveillance in outbreak prone areas, such as border crossings. It could also aid the mapping of multidrug resistant (MDR) *Plasmodium* haplotypes, allowing the identification and monitoring of geographical hotspots of MDR malaria, leading to targeted measures aimed at containing its distribution¹⁷. The utility of MX is not restricted to parasitic disease, since viruses

have also been detected in insect vectors¹⁸, leading to the possibility that MX could provide an early alert for the increase of the virus within a community too¹⁹.

Despite these promising applications, MX has yet to be adopted as standard practice for several reasons. For LF for example, in areas of low transmission/low parasite density, MX requires the collection and processing of large numbers of mosquitoes^{1,20,21}. Although pooling mosquitoes can aid the screening effort, the number of mosquitoes that can be combined is limited to 25, since larger pools decrease the sensitivity of parasite detection²². The need to screen large numbers of mosquitoes in small pool sizes reduces the cost-effectiveness of MX.

The development of a screening method that uses excreta/feces (E/F) collected from mosquitoes, rather than whole carcasses is an elegant solution to this problem. The screening of E/F allows the detection of parasite DNA from the voided material of up to 500 mosquitoes¹⁵ at a time. Collecting E/F also allows the recovery of parasite DNA from non-competent vector species, since the parasites are unable to establish within the vector and are released in the E/F post-bloodmeal²³. The use of much larger pools of mosquitoes and the lack of sorting required to isolate competent vectors should greatly reduce the cost, time and effort; therefore overcoming some of the current barriers to the large-scale implementation of MX for disease monitoring. Furthermore, mosquitoes collected for other surveillance purposes could be screened for pathogens without compromising the sample. This would provide the opportunity for joint surveillance of pathogens of interest in the community.

Although detection of parasite DNA in E/F has shown promise in laboratory settings¹⁵, an efficient method of collecting E/F samples from field-caught mosquitoes still needs to be developed. One consideration is the method of mosquito collection employed, as this may dictate the most appropriate method to collect E/F, due to the physical constraints that either a trap or mosquito housing container may impose. The aim of this paper is to further validate the E/F collection approach and to assess different methods of collection that may be implemented in the field.

Methods

Mosquito rearing and blood-feeding

Anopheles gambiae were reared from eggs to adults and housed under standard conditions (26°C and 80% relative humidity). Three to seven day old mosquitoes were sugar starved for 18 hours before each assay to ensure successful blood feeding. After starvation, mosquitoes were fed either a standard bloodmeal (human blood, obtained from the blood bank) or a bloodmeal spiked with a parasite of known density using the Hemotek feeding system (*B. malayi* and *Trypanosoma brucei brucei*) or using a glass feeder (*Plasmodium falciparum*). Twenty-four hours after feeding, mosquitoes were added to paper cups (10 per cup) covered with netting, with sugar-soaked cotton wool placed on top. Three cups of exposed mosquitoes and one cup of control mosquitoes per E/F collection method were held for 24 hours, before transferring to fresh cups for a further 24 hours. For the testing of E/F from individually-housed mosquitoes, the same protocol was

used, except that after *P. falciparum* exposure, one mosquito was added per paper cup instead of 10.

Parasites

For *B. malayi* exposures, microfilariae were obtained from in-house infected gerbils (*Meriones unguiculatus*) by intraperitoneal lavage²⁴ and added to human blood to a final concentration of 5000 mf/ml (100 mf/20 μ l). *T. b. brucei* bloodstream form MCRO/ZM/72/J10 CLONE 1²⁵ originally isolated from an infected rat, were added to human blood to give a final concentration of 2.2×10^6 parasites/ml. For *P. falciparum*, 3 ml of red blood cells with a trophozoite parasitaemia of 0.4% (3D7 strain) was combined with 3 ml of human serum, to give an estimated parasite load of 20,000/ μ l. To test the sensitivity of parasite DNA detection from E/F, mosquitoes were fed blood with either a 0.4% or 0.1% *P. falciparum* parasitaemia, before being individually housed in cups containing a superhydrophobic cone.

Excreta/feces collection methods

Superhydrophobic cone collection methods. Four different methods were used to collect the mosquito E/F. The first two methods both required the construction of paper cones with a superhydrophobic surface. To create the cone, A4 printer paper, cut to form a semi-circle was coated with NeverWet® (Rust-Oleum, Durham, UK) as per the manufacturer's instructions. Superhydrophobic

cones were then placed inside paper cups to allow the E/F to be deposited on either a small square of Whatman (GE Health Sciences, Buckinghamshire, UK) FTA card or into a 1.5 ml tube at the bottom of the cup (Figure 1A).

Following the transfer of mosquitoes at each 24-hour timepoint, the FTA cards or 1.5 ml tubes were removed from the bottom of the used cups. FTA cards containing E/F were stored individually in sealed plastic bags containing silicon beads, to protect samples from moisture. The 1.5 ml tubes were sealed and stored at -20°C .

Swab collection method. After the removal of mosquitoes, the paper cup was carefully opened along the seal to enable the swabbing of all internal surfaces. A small volume of nuclease-free water (~ 10 μ l) was added to the surface of the swab (IsoHelix DNA buccal swab). The wetted surface of the swab was used to resuspend and collect any E/F material in the cup, before using the dry side of the swab to collect any remaining material. Swab heads were removed and placed into 2ml tubes before storing at -20°C .

Wash collection method. Deposits of E/F material were resuspended in 100 μ l nuclease-free water using a 200 μ l pipette and gentle drawing up and down of the suspension. The 100 μ l of resuspended material was added to 100 μ l of ATL buffer in a 1.5 ml tube and stored at -20°C .

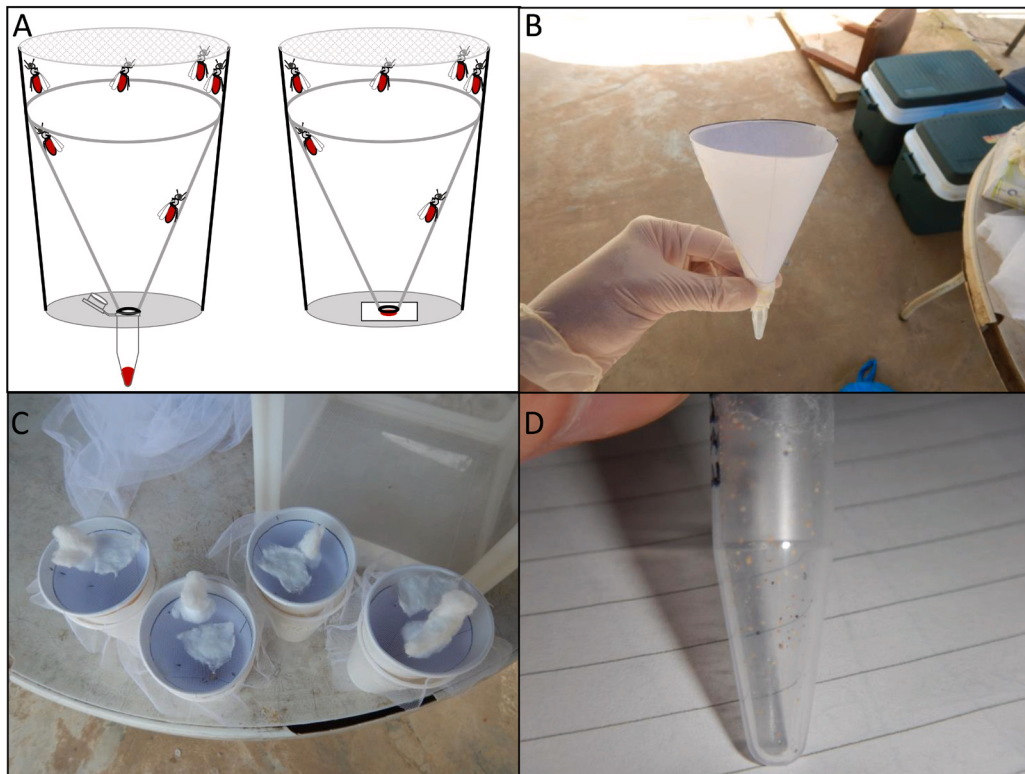


Figure 1. Schematic of the superhydrophobic cone and images from the field collections. (A) Schematic of the collection cups with the superhydrophobic cone used to collect excreta/feces (E/F) into a tube (left) or onto FTA card (right). From the field site - (B) the superhydrophobic cone being assembled, (C) wild-caught mosquitoes in the collection cups with superhydrophobic cones, (D) the resultant E/F in a collection tube.

Parasite detection

For all four collection methods, DNA was extracted using the QIAamp® DNA Micro Kit (QIAGEN, Manchester, UK). E/F samples on FTA card were processed following the 'Isolation of Genomic DNA from Dried Blood Spots' protocol from the manufacturer's handbook. For the E/F samples collected in the 1.5 ml tubes, the 'Isolation of Genomic DNA from Small Volumes of Blood' protocol from the manufacturer's handbook was followed with the following modifications to the reagent volumes: 180 µl of buffer ATL, 20 µl Proteinase K, 200 µl Buffer AL, 100 µl Ethanol. For swabs, DNA was extracted using the 'Isolation of Total DNA from Surface and Buccal Swabs' protocol except that the 56°C incubation step was increased to 3 hours. For wash samples, the 'Isolation of Genomic DNA from Small Volumes of Blood' protocol was followed, beginning at the addition of proteinase K, with the following amendments to reagent volumes: 20 µl Proteinase K, 200 µl Buffer AL, 100 µl Ethanol. All DNA extraction samples were eluted in 20 µl of nuclease-free water.

Amplification and detection of *B. malayi* DNA using real-time PCR was performed as described previously²⁶, with modifications to the reaction mixture: 1x TaqPath ProAmp Master mix (Applied Biosystems, Foster City, CA, USA), 0.4 µM of each primer, 0.125 µM of probe and 2 µl of DNA to give a final volume of 10 µl.

P. falciparum was detected as described by Kamau *et al.*²⁷ using only the *P. falciparum* specific primers and probe. Each reaction contained: 1x TaqPath ProAmp Master mix, 0.4 µM of each primer, 0.2 µM of probe and 2 µl of DNA to give a final volume of 10 µl.

The probe-based PCR cycling conditions were the same for both *B. malayi* and *P. falciparum* detection and were as follows: 95°C for 10 minutes followed by 40 cycles of 95°C for 15 s; 60°C for 60 s.

T. b. brucei DNA was detected using conventional PCR as detailed by Cunningham *et al.*¹⁶, using the TBR primers designed by Kazibwe²⁸.

Cone reusability testing

To assess the reuse of the superhydrophobic cone, mosquitoes exposed to a bloodmeal containing *P. falciparum* 2 days prior were added to cups containing superhydrophobic cones as described above (10 mosquitoes per cup, total of 3 cups). After 24 hours, mosquitoes were removed and 1.5 ml tubes containing the collected E/F were stored at -20°C until DNA extraction. The inner surfaces of the cones were washed using a Pasteur pipette to provide a gentle stream of distilled water from around the rim of the cone. After washing, 200 µl of nuclease-free water was added drop-wise around the top of the inside of the cones and collected in 1.5 ml tubes at the bottom, to mimic the collection of mosquito excreta. The washing process was repeated and a further sample collected for each cone before storing at -20°C. Identical collections were made using mosquitoes fed on unexposed blood to act as a control. DNA extraction and real-time PCR was performed to test for the presence of *P. falciparum*.

The above process was repeated, but instead of collecting E/F from exposed mosquitoes, 10 µl of DNA extracted from previous E/F collections was diluted 1 in 10 and 100 µl of this was added drop-wise around the top of each cone (three cones in total) and collected in a 1.5 ml tube at the bottom. The washing and sample collections were carried out as above and all samples were stored at -20°C, until real-time PCR was performed to test for the presence of *P. falciparum*.

To test cones for the retention of superhydrophobicity, three cones were washed ten times, as detailed above, before water was added drop-wise around the top of the inside of the cones using a Pasteur pipette. If no droplets adhered to the cone or caused wetting to the surface, then the cone was considered to have retained superhydrophobicity.

Data analysis

Real-time PCR data were captured using Bio-Rad CFX manager version 1.5 software, before exporting to Microsoft Excel 2016 to calculate mean Ct values.

Results

Mosquitoes were exposed to one pathogen per assay. Deposited material was collected on days 2 and 3 post-bloodmeal using each of the four E/F collection methods. All four methods employed to collect E/F allowed the detection of DNA from all three parasites (Table 1). Using the superhydrophobic cone to collect E/F material in a 1.5 ml tube offered the highest rate of detection across the three different parasites (Table 1), with 16 out of 18 samples showing positive for the presence of parasite DNA, followed by the wash method (14/18), superhydrophobic cone + FTA (13/18) and the swab method (12/18).

The detection of *B. malayi* DNA was highly variable between the different collection methods, ranging from 2 out of 6 samples showing positive for the swab method compared to 5 out of 6 for superhydrophobic cone + tube. The detection of both single-cell parasites proved to be more consistent between methods, highlighting the possible need to tailor the collection method to the type of parasite that is being screened for, as well as the type of mosquito collection method that is used.

Some observations on the practicalities of each of the methods employed are presented in Table 2.

To investigate the possibility of reusing the superhydrophobic cones, cones (n=3) were tested for contamination after housing *P. falciparum* exposed mosquitoes. After gentle washing with distilled water, 100 µl of nuclease-free water was added drop-wise around the top of the cone and collected. This washing process was repeated and after DNA extraction from the collected E/F and both collected washes, samples were tested using real-time PCR (Table 3). Ct values for the collected E/F material showed the presence of *Plasmodium* DNA as expected (Table 3 - Collection 1); however no samples collected after either of the wash steps were positive for parasite DNA. The experiment was

repeated but instead of housing mosquitoes in cups containing cones, DNA extracted from the E/F of exposed mosquitoes was added directly to the cones. The initial collection of the DNA run-through was positive for parasite DNA, and all subsequent samples collected post-washing were negative. These results indicate that after a simple washing step, the superhydrophobic cones are free from contaminating DNA and can be reused.

After successfully demonstrating the reuse of the superhydrophobic cone, we tested the performance of the cone when used to

collect E/F from individually-housed mosquitoes, exposed to a lower density of infection. We detected *P. falciparum* DNA in the E/F from each of the 12 mosquitoes that were housed individually (Table 4), even though six mosquitoes were fed on blood containing a fourfold reduction in parasitaemia (0.1%). Detection mainly occurred in the E/F samples collected from 48–72 hours post-bloodmeal (Table 4 – Day 3), which coincided with the peak amount of E/F collected in the 1.5 ml tubes. As expected, the higher parasitaemia led to lower Ct values, indicating a greater quantity of parasite DNA present in these samples.

Table 1. Detection of parasite DNA for each of the four different excreta/ feces collection methods.

Collection method	Detection of DNA (positive detection/number of samples)		
	<i>Brugia malayi</i>	<i>Trypanosoma brucei</i>	<i>Plasmodium falciparum</i>
Superhydrophobic cone + tube	5/6	6/6	5/6
Superhydrophobic cone + FTA	3/6	4/6	6/6
Wash method	4/6	4/6	6/6
Swab method	2/6	4/6	6/6

Table 2. Advantages and disadvantages of each excreta/feces (E/F) collection method.

Collection method	Advantages	Disadvantages
Superhydrophobic cone + tube	- Collects all E/F into 1.5 ml tube ready for DNA extraction	- E/F can sometimes be prevented from entering tube by loose cotton fibres or dead mosquitoes - Requires mosquitoes to be housed in a container/ trap suitable for the cone
Superhydrophobic cone + FTA	- May protect DNA from degrading and allow for longer term storage. Adaptable to detection of virus RNA	- Loose cotton fibres or dead mosquitoes stop E/F from being absorbed into the FTA card - Areas containing E/F must be punched out for processing - Requires mosquitoes to be housed in a container/ trap suitable for the cone
Wash	- Majority of E/F collected and added to storage buffer which may allow for longer term storage	- Time consuming/labour intensive - requires the surface of the container housing the mosquitoes to be waterproof - Difficult to see excreta, which is relatively colourless
Swab	- Requires no additional equipment for collection other than the swab	- Not all E/F material is recovered from the swab during DNA extraction - One swab has limited capacity to collect E/F. Containers with greater amount of deposits may require several swabs

Table 3. Reusability of the superhydrophobic cone.

Sample	Ct values		
	Collection 1	Collection 2 (after first wash)	Collection 3 (after second wash)
E/F cone 1	29.7	-ve	-ve
E/F cone 2	29.5	-ve	-ve
E/F cone 3	29.2	-ve	-ve
DNA Cone 1	31.3	-ve	-ve
DNA Cone 2	30.9	-ve	-ve
DNA Cone 3	31.4	-ve	-ve
Negative Control	-ve	-ve	-ve

Table 4. Detection of *Plasmodium falciparum* DNA from the excreta/ feces of individual mosquitoes collected using superhydrophobic cones.

Sample	Ct value	
	Day 2	Day 3
0.10%		
A	-ve	34.5
B	-ve	35.7
C	-ve	36.9
D	34.9	35.3
E	35.8	-ve
F	-ve	36
0.40%		
G	-ve	32.6
H	-ve	30.2
I	-ve	31.6
J	-ve	32.4
K	-ve	34
L	-ve	33.6
Controls	-ve	-ve

Discussion

Molecular xenomonitoring (MX) is a sensitive tool to detect the presence of infection within a community, particularly for diseases that cause a high number of asymptomatic infections, where there is low treatment seeking behaviour, and late onset of symptoms. However, several challenges exist that prevent the widespread use

of MX for post-MDA surveillance. One such barrier is the limit on the number of mosquitoes that can be pooled for analysis, increasing the quantity of reagents, time and labour required to process samples and thus increasing the cost. Using E/F released from mosquitoes, instead of whole mosquitoes, greatly improves the ratio of parasite to mosquito DNA and allows the screening of at least twenty times the number of mosquitoes than the standard approach¹⁵. The incorporation of a simple, low-cost, homemade adaptation to mosquito collection cups, in the form of a superhydrophobic cone, enabled the consistent detection of *B. malayi*, *P. falciparum* and *T. b. brucei*, with minimal processing of the E/F samples. Although the homemade cone is adaptable to a range of different containers, in situations where the use of the cone is not practical, we have shown that both swabbing or employing the wash method to collect E/F facilitates the detection of parasite DNA. Furthermore, the method employed here was sensitive enough to consistently detect the presence of *P. falciparum* DNA in E/F from individual mosquitoes. In our pilot studies, we detected *T. b. brucei* DNA in E/F from individual mosquitoes (unpublished data) and similar results have been reported for *B. malayi* detection²³.

Coating a sheet of paper with an inexpensive superhydrophobic layer before crafting into a cone shape allowed the entire amount of deposited E/F to be collected for DNA extraction, without requiring further processing, unlike the wash method or using a swab. This novel coating ensures that all E/F rolls quickly to the bottom of the cone to be collected in a 1.5 ml tube or to be absorbed onto an FTA card. Alongside our team's field collections, the superhydrophobic cone method was tested in typical field conditions, using wild-caught mosquitoes to collect the E/F over a 24-hour period, without causing mortality to the mosquitoes. Although the cones were not tested using parasite-exposed mosquitoes, we found that the performance of the cones in the field matched that of our laboratory trials in terms of depositing the E/F into tubes (Figure 1B–D). Our laboratory based tests show that the introduction of a simple washing technique ensures that the cone is free from contaminating parasite DNA. The lack of contamination is likely due to water-based droplets immediately running off the

surface of the cone. Any tiny droplets that remain are removed during washing, since superhydrophobic surfaces are often referred to as self-cleaning²⁹, with the addition of water enabling the removal of dust and small particles from the surface. In our experience, at least ten washing cycles of the cone can be conducted without disruption to the superhydrophobic properties, allowing for repeated reuse, further improving the cost-effectiveness of E/F collection. The number of times a cone can be reused will depend upon the handling between use, as harsh surface abrasion or exposure to certain detergents may diminish the superhydrophobicity of the cone. The washing steps allow the user to confirm that the superhydrophobic properties of the cone are intact prior to reuse.

We envision that the use of a superhydrophobic cone or other shaped surface could be integrated into a passive trap to allow the easy recovery of E/F from large numbers of mosquitoes with minimal cost or labour. In situations where such a device may not be considered practical, employing the wash or swabbing method to collect E/F is likely to be similarly effective (particularly for single-cell parasites) albeit more time consuming. The reduction in the detection of *B. malayi* DNA when E/F was collected by swabbing may be explained by the fact that swabbing left a greater amount of E/F residue still on the swabbed surface and not all the absorbed material was removed from the swab during DNA extraction. With less E/F material being available for DNA extraction, and therefore fewer copies of parasite DNA present in the PCR reaction, the chance of false negatives increases. That this only occurred for *B. malayi* could be due to a lower amount of parasite DNA present in these samples to begin with, when compared to *P. falciparum* and *T. b. brucei*.

Our future work will focus on determining the sensitivity of detection for *B. malayi*, *P. falciparum* and *T. b. brucei* when using the superhydrophobic cone to collect E/F. Also, we will examine whether vector-borne viruses can be detected in the E/F of both vectors and non-vectors and to discover if MX can be extended to pathogens that are not transmitted by vectors at all, but that may be picked up from a human host during bloodfeeding. Here we show that DNA from *T. brucei* is detected in the E/F of *A. gambiae*, which is not a vector, but would ingest and excrete the parasites while blood feeding on an infected individual. If non-vector-borne

diseases could be detected in E/F, this would allow the screening of a much broader range of pathogens within a community using the MX approach. If this is the case, it should be possible to develop a PCR-based approach that could simultaneously screen for a battery of pathogens, giving valuable, real-time information on the presence and transmission of disease within a specific location. This information could be used to initiate more comprehensive mapping of disease prevalence, instigate test-and-treat for applicable pathogens or to implement vector control interventions to specific areas to stop transmission.

Data availability

Raw data are available on OSF: <http://doi.org/10.17605/OSF.IO/9KQJR>³⁰.

Data are available under the terms of the [Creative Commons Zero “No rights reserved” data waiver](#) (CC0 1.0 Public domain dedication)

Competing interests

No competing interests were disclosed.

Grant information

Bill & Melinda Gates Foundation [OPP1154992] and Medical Research Council [MR/P025285/1].

The funders had no role in study design, data collection and analysis, decision to publish, or preparation of the manuscript.

Acknowledgements

The authors wish to thank the following people from the Liverpool School of Tropical Medicine: Dr Alvaro Acosta Serrano, Dr Lee Haines and Dr Clair Rose for the provision of *T. b. brucei*; Prof Giancarlo Biagini, Mrs Jill Davies, Dr Grazia Camarda and Mrs Salwa Alqurashi for providing *P. falciparum* trophozoites; Prof Mark Taylor, Mr Andrew Steven and Mr John Archer for the provision of *B. malayi* microfilariae; Dr Emily Adams, Dr Lucas Cunningham and Ms Vera Unwin for providing the primers for *T. b. brucei*, and primers and probe for *P. falciparum* detection; Ms Katherine Gleave and Mr Jonathan Thornton for mosquito maintenance.

References

- Owusu IO, de Souza DK, Anto F, *et al.*: **Evaluation of human and mosquito based diagnostic tools for defining endpoints for elimination of Anopheles transmitted lymphatic filariasis in Ghana.** *Trans R Soc Trop Med Hyg.* 2015; **109**(10): 628–35. [PubMed Abstract](#) | [Publisher Full Text](#)
- Farid HA, Morsy ZS, Helmy H, *et al.*: **A critical appraisal of molecular xenomonitoring as a tool for assessing progress toward elimination of lymphatic filariasis.** *Am J Trop Med Hyg.* 2007; **77**(4): 593–600. [PubMed Abstract](#) | [Free Full Text](#)
- Mladonicky JM, King JD, Liang JL, *et al.*: **Assessing transmission of lymphatic filariasis using parasitologic, serologic, and entomologic tools after mass drug administration in American Samoa.** *Am J Trop Med Hyg.* 2009; **80**(5): 769–73. [PubMed Abstract](#)
- Reimer LJ, Thomsen EK, Tisch DJ, *et al.*: **Insecticidal bed nets and filariasis transmission in Papua New Guinea.** *N Engl J Med.* 2013; **369**(8): 745–53. [PubMed Abstract](#) | [Publisher Full Text](#) | [Free Full Text](#)
- Rao RU, Samarasekera SD, Nagodavithana KC, *et al.*: **Programmatic Use of Molecular Xenomonitoring at the Level of Evaluation Units to Assess Persistence of Lymphatic Filariasis in Sri Lanka.** *PLoS Negl Trop Dis.* 2016; **10**(5): e0004722. [PubMed Abstract](#) | [Publisher Full Text](#) | [Free Full Text](#)
- Fischer P, Wibowo H, Pischke S, *et al.*: **PCR-based detection and identification of the filarial parasite *Brugia timori* from Alor Island, Indonesia.** *Ann Trop Med Parasitol.* 2002; **96**(8): 809–21. [PubMed Abstract](#)
- WHO: **Monitoring and epidemiological assessment of mass drug**

- administration in the global programme to eliminate lymphatic filariasis: a manual for national elimination programmes. *World Heal Organ*. 2011; 1–100. [Reference Source](#)
8. Brady MA, Stelmach R, Davide-Smith M, *et al.*: **Costs of Transmission Assessment Surveys to Provide Evidence for the Elimination of Lymphatic Filariasis**. *PLoS Negl Trop Dis*. 2017; 11(2): e0005097. [PubMed Abstract](#) | [Publisher Full Text](#) | [Free Full Text](#)
 9. Chu BK, Deming M, Biritwum NK, *et al.*: **Transmission Assessment Surveys (TAS) to Define Endpoints for Lymphatic Filariasis Mass Drug Administration: A Multicenter Evaluation**. *PLoS Negl Trop Dis*. 2013; 7(12): e2584. [PubMed Abstract](#) | [Publisher Full Text](#) | [Free Full Text](#)
 10. Gounoue-Kamkumo R, Nana-djeunga HC, Bopda J, *et al.*: **Loss of sensitivity of immunochromatographic test (ICT) for lymphatic filariasis diagnosis in low prevalence settings: consequence in the monitoring and evaluation procedures**. *BMC Infect Dis*. 2015; 15: 579. [PubMed Abstract](#) | [Publisher Full Text](#) | [Free Full Text](#)
 11. Lau CL, Won KY, Lammie PJ, *et al.*: **Lymphatic Filariasis Elimination in American Samoa: Evaluation of Molecular Xenomonitoring as a Surveillance Tool in the Endgame**. *PLoS Negl Trop Dis*. 2016; 10(11): e0005108. [PubMed Abstract](#) | [Publisher Full Text](#) | [Free Full Text](#)
 12. Hotez P, Aksoy S: **PLOS Neglected Tropical Diseases: Ten years of progress in neglected tropical disease control and elimination ... More or less**. *PLoS Negl Trop Dis*. 2017; 11(4): e0005355. [PubMed Abstract](#) | [Publisher Full Text](#) | [Free Full Text](#)
 13. Feachem RG, Phillips AA, Hwang J, *et al.*: **Shrinking the malaria map: Progress and prospects**. *Lancet*. 2010; 376(9752): 1566–78. [PubMed Abstract](#) | [Publisher Full Text](#) | [Free Full Text](#)
 14. Bitome-Essono PY, Ollomo B, Arnathau C, *et al.*: **Tracking zoonotic pathogens using blood-sucking flies as 'flying syringes'**. *eLife*. 2017; 6: 1–21, pii: e22069. [PubMed Abstract](#) | [Publisher Full Text](#) | [Free Full Text](#)
 15. Pilotte N, Zaky WI, Abrams BP, *et al.*: **A Novel Xenomonitoring Technique Using Mosquito Excreta/Feces for the Detection of Filarial Parasites and Malaria**. *PLoS Negl Trop Dis*. 2016; 10(4): e0004641. [PubMed Abstract](#) | [Publisher Full Text](#) | [Free Full Text](#)
 16. Cunningham LJ, Lingley JK, Haines LR, *et al.*: **Illuminating the Prevalence of *Trypanosoma brucei* s.l. in *Glossina* Using LAMP as a Tool for Xenomonitoring**. *PLoS Negl Trop Dis*. 2016; 10(2): e0004441. [PubMed Abstract](#) | [Publisher Full Text](#) | [Free Full Text](#)
 17. Sorosjinda-Nunthawarasilp P, Bhumiratana A: **Ecotope-based entomological surveillance and molecular xenomonitoring of multidrug resistant malaria parasites in *anopheles* vectors**. *Interdiscip Perspect Infect Dis*. 2014; 2014: 969531. [PubMed Abstract](#) | [Publisher Full Text](#) | [Free Full Text](#)
 18. Fontaine A, Jiolle D, Moltini-Conclois I, *et al.*: **Excretion of dengue virus RNA by *Aedes aegypti* allows non-destructive monitoring of viral dissemination in individual mosquitoes**. *Sci Rep*. 2016; 6: 24885. [PubMed Abstract](#) | [Publisher Full Text](#) | [Free Full Text](#)
 19. Girod R, Guidez A, Carinci R, *et al.*: **Detection of Chikungunya Virus Circulation Using Sugar-Baited Traps during a Major Outbreak in French Guiana**. *PLoS Negl Trop Dis*. 2016; 10(9): e0004876. [PubMed Abstract](#) | [Publisher Full Text](#) | [Free Full Text](#)
 20. Ramaiah KD, Ottesen EA: **Progress and Impact of 13 Years of the Global Programme to Eliminate Lymphatic Filariasis on Reducing the Burden of Filarial Disease**. *PLoS Negl Trop Dis*. 2014; 8(11): e3319. [PubMed Abstract](#) | [Publisher Full Text](#) | [Free Full Text](#)
 21. Schmaedick MA, Koppel AL, Pilotte N, *et al.*: **Molecular Xenomonitoring Using Mosquitoes to Map Lymphatic Filariasis after Mass Drug Administration in American Samoa**. *PLoS Negl Trop Dis*. 2014; 8(8): e3087. [PubMed Abstract](#) | [Publisher Full Text](#) | [Free Full Text](#)
 22. Rao RU, Atkinson LJ, Ramzy RM, *et al.*: **A real-time PCR-based assay for detection of *Wuchereria bancrofti* DNA in blood and mosquitoes**. *Am J Trop Med Hyg*. 2006; 74(5): 826–32. [PubMed Abstract](#) | [Free Full Text](#)
 23. Erickson SM, Fischer K, Weil GJ, *et al.*: **Distribution of *Brugia malayi* larvae and DNA in vector and non-vector mosquitoes: implications for molecular diagnostics**. *Parasit Vectors*. 2009; 2(1): 56. [PubMed Abstract](#) | [Publisher Full Text](#) | [Free Full Text](#)
 24. Griffiths KG, Alworth LC, Harvey SB, *et al.*: **Using an intravenous catheter to carry out abdominal lavage in the gerbil**. *Lab Anim (NY)*. 2010; 39(5): 143–8. [PubMed Abstract](#) | [Publisher Full Text](#)
 25. Gibson WC, de C Marshall TF, Godfrey DG: **Numerical analysis of enzyme polymorphism: a new approach to the epidemiology and taxonomy of trypanosomes of the subgenus *Trypanozoon***. *Adv Parasitol*. 1980; 18: 175–246. [PubMed Abstract](#) | [Publisher Full Text](#)
 26. Rao RU, Weil GJ, Fischer K, *et al.*: **Detection of *Brugia* parasite DNA in human blood by real-time PCR**. *J Clin Microbiol*. 2006; 44(11): 3887–93. [PubMed Abstract](#) | [Publisher Full Text](#) | [Free Full Text](#)
 27. Kamau E, Alemayehu S, Feghali KC, *et al.*: **Multiplex qPCR for detection and absolute quantification of malaria**. *PLoS One*. 2013; 8(8): e71539. [PubMed Abstract](#) | [Publisher Full Text](#) | [Free Full Text](#)
 28. Nalunkuma Kazibwe AJ: **Factors influencing the spread and selection of drug resistance in Human African Trypanosomiasis**. 2008. [Reference Source](#)
 29. Bhushan B, Jung YC, Koch K: **Self-cleaning efficiency of artificial superhydrophobic surfaces**. *Langmuir*. 2009; 25(5): 3240–8. [PubMed Abstract](#) | [Publisher Full Text](#)
 30. Cook D: **A Superhydrophobic Cone to Facilitate the Xenomonitoring of Filarial Parasites, Malaria, and Trypanosomes Using Mosquito Excreta/feces**. *Open Science Framework*. 2017. [Data Source](#)

Open Peer Review

Current Referee Status:  

Version 1

Referee Report 19 January 2018

doi:[10.21956/gatesopenres.13809.r26156](https://doi.org/10.21956/gatesopenres.13809.r26156)



Warwick N. Grant 

Department of Animal, Plant and Soil Sciences, La Trobe University, Bundoora, Vic, Australia

- This study makes important distinction in Introduction that the aim is to measure disease prevalence and not transmission potential i.e. have vectors fed on an infected person rather than have ingested microfilaria matured to infective larvae.
- The basic premise of this work is that the excreta of engorged female mosquitos will contain sufficient parasite DNA for detection, and has been demonstrated previously.
- This manuscript addresses the need to “operationalize” earlier research by developing a simpler, more routine method for excreta collection.
- In the Methods section, under the subheading “Excreta/faeces collection methods” there are 4 methods listed. I found the organisation of this section slightly confusing because the first section (headed “Superhydrophobic cone collection methods” starts with a sentence stating that there are 4 methods, only two of which utilise superhydrophobic cones. It is not entirely clear whether the last two methods described (swab & wash collection) are washing and swabbing of a hydrophobic cone, or of the inside surface of a paper cup without the addition of a cone. An alternative arrangement that makes this more obvious might be...

Excreta/faeces collection methods

Four different methods were used to collect mosquito E/F, two of which utilise superhydrophobic cones inside paper cups and two of which do not require superhydrophobic cones.

Superhydrophobic cone collection methods. To create the cone.... (then follow with the description of the cone methods as per the original text).

Alternative collection methods. In the absence of a superhydrophobic cone insert into the paper cup, mosquito E/F is deposited directly on to the interior surface of the cup. This E/F can be collected by either direct washing of E/F, or by swabbing the interior of the cup followed by DNA extraction from the swab. ... (then follow with the description of these two methods as per the original text).

- The conclusions reached by the authors are supported by the data they present. As the authors point out, this is a laboratory based study utilising mosquitos fed pathogen infected blood under controlled conditions, and the utility of the method for field based application remains to be determined.
- With respect to citation of relevant literature, there is a more recent review of nucleic acid based xenomonitoring that could be cited (Minetti et al. (2016)¹) and there is literature on virus xenomonitoring in mosquitos via collection of saliva deposited during sugar feeding (Hall-Mendelin

et al. (2010)²). The latter paper has been cited more than 25 times for xenomonitoring of virus pathogens and, although not tested for filarial parasites, may be worth including given that the authors suggest that E/F analysis may be applied to viruses in addition to filarial and protozoan parasites.

References

1. MINETTI C, LACOURSE E, REIMER L, STOTHARD J: Focusing nucleic acid-based molecular diagnostics and xenomonitoring approaches for human helminthiases amenable to preventive chemotherapy. *Parasitology Open*. 2016; **2**. [Publisher Full Text](#)
2. Hall-Mendelin S, Ritchie SA, Johansen CA, Zborowski P, Cortis G, Dandridge S, Hall RA, van den Hurk AF: Exploiting mosquito sugar feeding to detect mosquito-borne pathogens. *Proc Natl Acad Sci U S A*. 2010; **107** (25): 11255-9 [PubMed Abstract](#) | [Publisher Full Text](#)

Is the work clearly and accurately presented and does it cite the current literature?

Yes

Is the study design appropriate and is the work technically sound?

Yes

Are sufficient details of methods and analysis provided to allow replication by others?

Partly

If applicable, is the statistical analysis and its interpretation appropriate?

Not applicable

Are all the source data underlying the results available to ensure full reproducibility?

No source data required

Are the conclusions drawn adequately supported by the results?

Yes

Competing Interests: No competing interests were disclosed.

Referee Expertise: Filarial and gastrointestinal parasite genomics, with particular focus on drug resistance genetics

I have read this submission. I believe that I have an appropriate level of expertise to confirm that it is of an acceptable scientific standard.

Referee Report 16 November 2017

doi:[10.21956/gatesopenres.13809.r26053](https://doi.org/10.21956/gatesopenres.13809.r26053)



Dziedzom K. de Souza

Department of Parasitology, Noguchi Memorial Institute for Medical Research, University of Ghana, Accra, Ghana

Xenomonitoring presents opportunities for assessing the presence/absence of infections in populations through the testing of hematophagous insects for specific pathogens of interest. The study presented here by Cook and colleagues, highlights important developments in the field of xenomonitoring, testing new tools to enhance the applicability of MX as a public health tool. The paper is well written and acceptable for indexing. However, there are some comments/clarification which could improve the clarity and quality of the manuscript.

Comments:

- The mosquitoes in the laboratory were fed with blood meals containing very high parasite load, which may not always be found in the field. It would also have been appropriate to test the efficiency of the cones using low parasite load bloodmeals. This will also enable the determination of any correlation between the parasite counts in the blood meal and the Ct values obtained. However, I do appreciate that it is the superhydrophobic cone that is being evaluated and not really the use of mosquito excreta.
- Section under “Cone reusability testing”. I think the washing procedure here is very important for replicability and should be further expanded. Too much washing may lead to destruction of the cone, while too little may leave DNA that could contaminate future samples. The term “gentle washing” is relative.
- In the results section, even though samples were tested after washing, and no samples found positive for parasite DNA, what is the possibility that DNA patches were not missed in the process? I guess my difficulty is with the washing procedure. When the authors state that “100 µl of nuclease-free water was added dropwise around the top of the cone and collected” what do they mean? Was all the surface covered? I am just trying to picture the process. Assuming [this drawing](#) represents the cone, and the lines with arrows represent the 100 µl of nuclease-free water, would it be right to say that sections (between the arrows) may have been missed?
- In the discussion, Section starting “Using E/F released from mosquitoes, instead of whole mosquitoes, greatly improves the ratio of parasite to mosquito DNA and allows the screening of at least twenty times the number of mosquitoes than the standard approach” it might be worth mentioning other advantages/ disadvantages to using mosquito excreta compared to whole mosquito extractions. One typical example is the role of insect cuticle in inhibiting PCR reactions.
- Would the chemical used in coating the cone have any effect on DNA stability? In this study, high parasite load bloodmeal were used, which may imply high DNA recovery. But should the opposite be the case, would enough DNA be recovered for testing?
- Last but one paragraph of discussion “we envisage that the use of a ... into a passive trap to allow...”. Please explain how this will be used in field conditions. Practical examples may be useful. Can large numbers of mosquitoes be collected using aspirators or other methods without large cost or labor inputs?
- “The reduction in the detection of *B. malayi* DNA when E/F was collected by swabbing may be explained by the fact that swabbing left a greater amount of E/F residue still on the swabbed surface”. This could be evaluated by testing the surface (cutting it out) for DNA.

- Tables 1 and 4. If possible, provide details on the concentration of DNA recovered by each method, and for each parasite species. This might be useful in estimating the parasite detection limits.

Is the work clearly and accurately presented and does it cite the current literature?

Yes

Is the study design appropriate and is the work technically sound?

Yes

Are sufficient details of methods and analysis provided to allow replication by others?

Yes

If applicable, is the statistical analysis and its interpretation appropriate?

Yes

Are all the source data underlying the results available to ensure full reproducibility?

Yes

Are the conclusions drawn adequately supported by the results?

Yes

Competing Interests: Dr. Reimer and myself are both supervisors on the same Wellcome Trust-funded fellowship.

Referee Expertise: Lymphatic filariasis, xenomonitoring

I have read this submission. I believe that I have an appropriate level of expertise to confirm that it is of an acceptable scientific standard.

Author Response 27 Nov 2017

Lisa Reimer,

Our response to reviewer 1 comments appear below in italics

- The mosquitoes in the laboratory were fed with blood meals containing very high parasite load, which may not always be found in the field. It would also have been appropriate to test the efficiency of the cones using low parasite load bloodmeals. This will also enable the determination of any correlation between the parasite counts in the blood meal and the Ct values obtained. However, I do appreciate that it is the superhydrophobic cone that is being evaluated and not really the use of mosquito excreta.

We agree that it will be important to test the lower limits of detection before scaling up the approach. For this study, we wanted to compare different collections methods while keeping the potential for variability low between exposed mosquitoes. We have clarified the objective and also included this as a description of our future work.

- Section under “Cone reusability testing”. I think the washing procedure here is very important for replicability and should be further expanded. Too much washing may lead to destruction of the cone, while too little may leave DNA that could contaminate future samples. The term “gentle washing” is relative.

We have clarified this in the text to mean “non-abrasive washing”. The coating is durable when washed according to the manufacturer’s instructions - if water is applied without abrasive force the coating will remain undamaged.

- In the results section, even though samples were tested after washing, and no samples found positive for parasite DNA, what is the possibility that DNA patches were not missed in the process? I guess my difficulty is with the washing procedure. When the authors state that “100 µl of nuclease-free water was added dropwise around the top of the cone and collected” what do they mean? Was all the surface covered? I am just trying to picture the process. Assuming [this drawing](#) represents the cone, and the lines with arrows represent the 100 µl of nuclease-free water, would it be right to say that sections (between the arrows) may have been missed?

It is difficult to be certain as to whether the whole surface was contacted by the water, as when the droplets hit the top of the cone, they rapidly roll or bounce to the bottom of the cone and into the tube. We tried to increase the contact with the surface area of the cone by depositing the droplets at an angle – leading to a corkscrew pattern of rinsing the cone. Since the cone tapers to a point we are confident that the DNA (or the excreta from mosquitoes) and the subsequent rinsing both passed over the same areas near the bottom of the cone.

- In the discussion, Section starting “Using E/F released from mosquitoes, instead of whole mosquitoes, greatly improves the ratio of parasite to mosquito DNA and allows the screening of at least twenty times the number of mosquitoes than the standard approach” it might be worth mentioning other advantages/ disadvantages to using mosquito excreta compared to whole mosquito extractions. One typical example is the role of insect cuticle in inhibiting PCR reactions.

We have added a statement to say the DNA extraction approach used within the paper should remove proteins that inhibit PCR (referencing the Pilotte et al. 2016 paper). However we can’t confirm the absence of inhibitory products since these may be present in the blood (and possibly the faeces as well).

- Would the chemical used in coating the cone have any effect on DNA stability? In this study, high parasite load bloodmeal were used, which may imply high DNA recovery. But should the opposite be the case, would enough DNA be recovered for testing?

Before the first use, cones were gently washed to remove any excess coating that might contaminate the excreta sample. We failed to describe this adequately in the manuscript, but have added further details. The general improvement in the detection of parasite material compared to swabbing or washing indicates that when using the same parasite load, the cone is likely to produce improved detection, so DNA stability is unlikely to be affected for the short periods of collection employed here. We cannot say whether DNA stability would be affected over a longer period of time, but contact time with the coating is very short, reducing the likelihood of any interference.

- Last but one paragraph of discussion “we envisage that the use of a ... into a passive trap to allow...”. Please explain how this will be used in field conditions. Practical examples may be useful. Can large numbers of mosquitoes be collected using aspirators or other methods without large cost or labor inputs?

This is exactly what we’d like to explore with future research (or inspire others to develop passive trap ideas), though we cannot yet comment on what methods would be most appropriate to keep costs down

- “The reduction in the detection of B. malayi DNA when E/F was collected by swabbing may be explained by the fact that swabbing left a greater amount of E/F residue still on the swabbed surface”. This could be evaluated by testing the surface (cutting it out) for DNA.

This is a qualitative observation rather than a quantitative result – the swab quickly became saturated and multiple swabs would be needed to pick up all the material.

- Tables 1 and 4. If possible, provide details on the concentration of DNA recovered by each method, and for each parasite species. This might be useful in estimating the parasite detection limits.

Good idea, we have quantified the amount of DNA in each sample and will present it in the results. Although we can't be sure whether we have parasite, host or mosquito DNA in the sample, it does illustrate the ability of the methods to recover deposited material.

Competing Interests: none
